

# LogTag

## DRY ICE PROBE-LESS LOW TEMPERATURE RECORDER



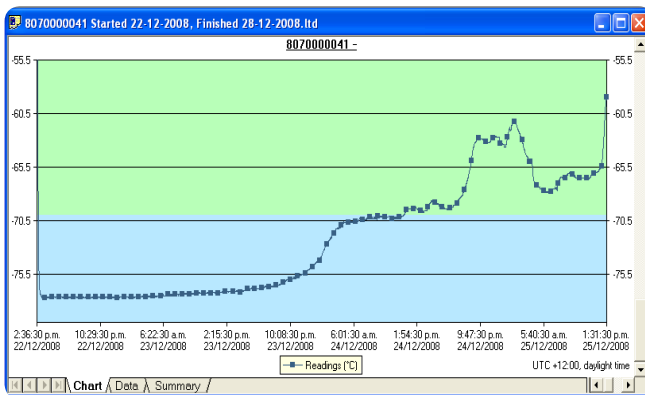
The LogTag Dry Ice “Probe-less” Temperature Recorder operates, measures and stores up to 8000 temperature readings in temperature environments ranging from -80°C to +40°C (-112°F to +104°F).

Intended for use in transit monitoring of articles stored in packaging incorporating dry ice cooling agents.

Available in single trip (SRIL-8) and multiple trip (TRIL-8) versions.

Using the LogTag Interface and LogTag’s freely available companion software LogTag Analyser , the LogTag Dry Ice Temperature Recorder is easily configured for recording conditions including delayed start, sampling interval, number of readings and configuration of conditions to activate the ALERT indicator.

The Red Alert indicator provides an immediate indication, without access to a PC, if any readings are outside the limits specified at the time the unit was configured. Green OK indicator provides immediate visual confirmation, without access to a PC, that the unit is operating.



Readings are downloaded using LogTag Analyser which provides facilities for charting, zooming, listing data statistics and allows exporting the data to other applications such as Excel.

The product incorporates an external temperature sensor uniquely arranged in a recess in the case. This arrangement protects the sensor from physical damage while retaining the faster response time normally associated with remote sensors.

## Product Highlights

- **Alert indicator** – indicates if readings are outside of preset limits
- **OK indicator** indicates if still recording and if readings within configured limits
- **Inspection mark** in log by push button
- **Push Button** Logging start with optional delayed start or specific **Time & Date start**
- **Rapid Download!** Takes only seconds to download recordings
- **‘Pre-Start’ logging** - Logtag can be configured to record even if it has not been started.
- **High performance** at low cost
- **Credit card sized case** – thin enough to be easily mailed “letter rate”.
- **Real time clock** records time & temperature simultaneously
- **Easy to use** LogTag Analyser software that runs on any PC configures LogTag for recording then downloads resulting data for analysis.  
Data can also be exported to formats compatible with other applications such as Excel
- **Re-calibration** to achieve higher accuracy possible

# Technical Specifications

<b>Part Order Code</b>	TRIL-8 (Multi-use: up to 1000hrs@-80°C) (Note 1) SRIL-8 (Single use)
<b>Recorder operating temperature measurement range</b>	-80 ~ +40°C (-112°F ~ +104°F)
<b>Recorder operating mode</b>	Available in Single use or Multi-use
<p><b>Rated Temperature reading accuracy*</b></p> <p>Better than <math>\pm 1^\circ\text{C}</math> for <math>-30^\circ\text{C} \sim +20^\circ\text{C}</math>  better than <math>\pm 1.2^\circ\text{C}</math> for <math>-45^\circ\text{C} \sim -30^\circ\text{C}</math> &amp; <math>+20^\circ\text{C} \sim +40^\circ\text{C}</math>  better than <math>\pm 1.7^\circ\text{C}</math> for <math>-80^\circ\text{C} \sim -45^\circ\text{C}</math></p> <p><b>LogTag TRIL Temperature Recorder (Probe-less Dry ICE Recorder) Rated Ex-factory Temperature vs Accuracy</b></p> <p>Note: This is a <i>rating</i>. Actual accuracy figures could be very much better. Accuracy can also be improved by recalibration.</p>	<p><b>Rated Temperature reading resolution#</b></p> <p>Less than <math>0.1^\circ\text{C}</math> for <math>-80^\circ\text{C} \sim 0.0^\circ\text{C}</math>,  less than <math>0.2^\circ\text{C}</math> for <math>0.0^\circ\text{C} \sim +20^\circ\text{C}</math>  less than <math>0.5^\circ\text{C}</math> for <math>+20^\circ\text{C} \sim +40^\circ\text{C}</math> (see below)</p> <p><b>LogTag TRIL Temperature Recorder (Probe-less Dry ICE Recorder) Rated Ex-factory Temperature vs Resolution</b></p> <p>#LogTag Analyser currently displays to one decimal place of °C or °F. The native resolution is what is stored in the LogTag.</p> <p>Actual performance is normally superior to rated performance.</p>
<b>Capacity</b>	8000 temperature readings (16Kbytes memory)
<b>Sampling frequency</b>	adjustable, 1min to several hours
<b>Download Time</b>	Typically with full memory in less than 5 seconds depending on computer or readout device used.
<b>Environmental</b>	IP65
<b>Power source</b>	3V low temperature chemistry Lithium battery.
<b>Battery life / Endurance</b>	Minimum storage life of 12 months before 'start'. Single use version rated for a typical trip of 2 weeks duration at dry ice temperatures. Multi-use version is rated for up to a total accumulative exposure of 1000hrs @ -80°C across multiple trips.
<b>Size</b>	86mm(H)x54.5mm(W)x8.6mm(T)
<b>Weight</b>	35grams
<b>Case Material</b>	Polycarbonate
<b>Interface &amp; software</b>	Operates with standard LogTag Interface cradles Requires LogTag Analyser 2.2r20 or later.

NOTE 1: Prior to December 2011 the TRIL-8 battery specification and management system limited the product to a total of 3 trips.

LogTag Recorders Ltd reserves the right to change this product's specifications without notice.